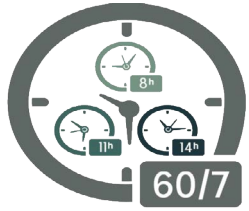


## Hours of Service (HOS) Part 395 Wallet Card

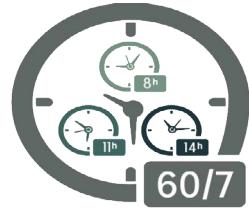


### **60/7 or 70/8 Limit:**

Both clocks are connected on-duty and driving statuses. The key is NOT to exceed a combined 60 hours in a seven-day period or 70 hours in an eight-day period.



## Hours of Service (HOS) Part 395 Wallet Card

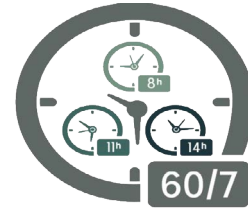


### **60/7 or 70/8 Limit:**

Both clocks are connected on-duty and driving statuses. The key is NOT to exceed a combined 60 hours in a seven-day period or 70 hours in an eight-day period.



## Hours of Service (HOS) Part 395 Wallet Card

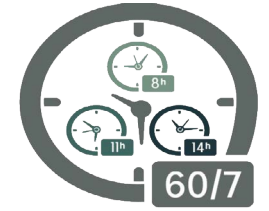


### **60/7 or 70/8 Limit:**

Both clocks are connected on-duty and driving statuses. The key is NOT to exceed a combined 60 hours in a seven-day period or 70 hours in an eight-day period.



## Hours of Service (HOS) Part 395 Wallet Card

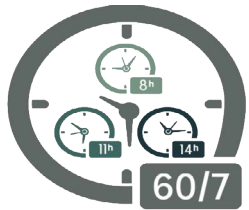


### **60/7 or 70/8 Limit:**

Both clocks are connected on-duty and driving statuses. The key is NOT to exceed a combined 60 hours in a seven-day period or 70 hours in an eight-day period.



## Hours of Service (HOS) Part 395 Wallet Card

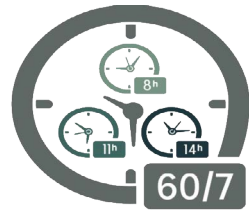


### **60/7 or 70/8 Limit:**

Both clocks are connected on-duty and driving statuses. The key is NOT to exceed a combined 60 hours in a seven-day period or 70 hours in an eight-day period.



## Hours of Service (HOS) Part 395 Wallet Card

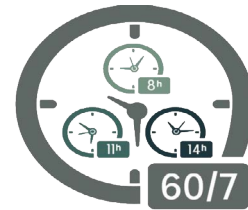


### **60/7 or 70/8 Limit:**

Both clocks are connected on-duty and driving statuses. The key is NOT to exceed a combined 60 hours in a seven-day period or 70 hours in an eight-day period.



## Hours of Service (HOS) Part 395 Wallet Card

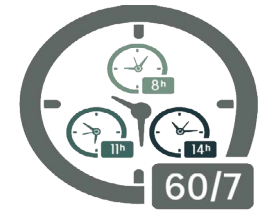


### **60/7 or 70/8 Limit:**

Both clocks are connected on-duty and driving statuses. The key is NOT to exceed a combined 60 hours in a seven-day period or 70 hours in an eight-day period.



## Hours of Service (HOS) Part 395 Wallet Card



### **60/7 or 70/8 Limit:**

Both clocks are connected on-duty and driving statuses. The key is NOT to exceed a combined 60 hours in a seven-day period or 70 hours in an eight-day period.



